

# QUICK START GUIDE

## SOUND LEVEL CALIBRATOR



**13.2MM CAVITY DIAMETER**



**SCAN THE QR CODE**  
to download  
**USER MANUAL**  
in different languages



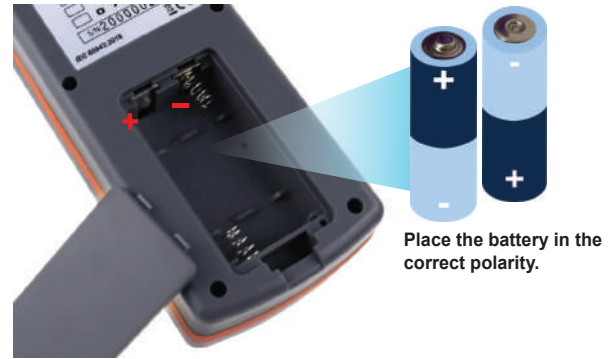
**TUTORIAL VIDEO ON HOW TO USE**

[www.cd50.net/893](http://www.cd50.net/893)

 **Need more help? CONTACT US.**

### Power Supply

Open the battery cover and install 2pcs AA size batteries in the correct polarity and in good contact.



**NOTE:** The Power LED turns into red color when the battery voltage is below 2.2V. Please change new 2pcs AA batteries to ensure accurate reading.

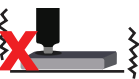
### Cautions before operation



1. Leave the calibrator in a stable room temperature (20 - 25°C) for at least 2 hours to make it reach the temperature equilibrium.



2. Make sure the microphone and the calibrator are correctly aligned during insertion to avoid damage



3. The calibrator need to be placed on a flat surface. While measuring, you should move neither the microphone nor the calibrator and make sure that the worktable doesn't transmit vibrations.



4. During calibration, if the environmental conditions are not respected, such as

- Ambient noise is too large
- Shocks given involuntarily

Wait for the stabilization before resuming the calibration process.



5. Store the calibrator in a hard case to protect and to avoid the followings:


- Physical shocks or drops
- Ingress of dirt, dust and other foreign objects into the sound cavity
- Exposure to water droplets or condensation




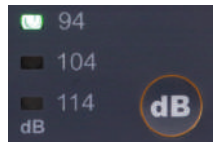
### Operation

1. Carefully insert the microphone up to the bottom within the calibrator cavity.




2. Press the power key  to turn it on. The green power and dB LED will flash for 10 seconds until the system's warm up time is completed.

3. The calibrator is default as 94dB. Press the dB toggle key  to toggle from the 94.0 dB, 104dB and 114dB if needed. After around 8 seconds, the selected dB level green LED stop flashing to indicate the system is stable



4. Check the detected value on the sound level meter display. If the detected value does not match the calibrator's signal ( $\pm 0.4\text{dB}$ ), adjust it as explained in manual of the sound level meter until matches the calibrator's signal.



5. After the calibration had finished, press the power key  to turn it off and remove the microphone from the calibrator.